

# Delta Lighting LED Drivers

## Standard Product Offering Overview

January, 2026



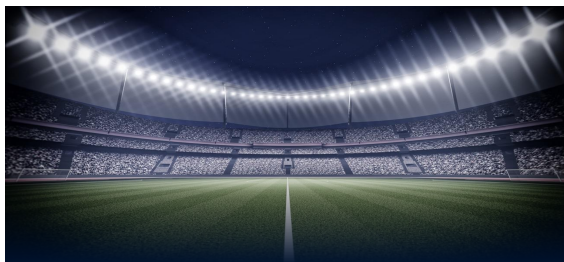
# Delta EMEA LED Drivers

## Focused Market / Applications

### Road/Street Lighting



### Sport Venues (Indoor / Outdoor)



### Refrigeration & Industrial Lighting



## Delta LED Driver Solutions



**EUCI**  
Premium / Lite / Basic  
22/40/75/130/170W



**EUCO Arena Sport**  
DALI / DMX  
1x CH 600W  
2x CHs 1.0KW/1.2KW/1.4KW  
3x CHs 1.5KW/1.6KW/1.8KW/2.1KW  
4x CHs 1.2KW



**USVI RDL**  
24Vdc  
20/60/80/100/150/2400W



**USCO Pro**  
0-10V  
320/600W  
LNA Series  
0-10V  
1.2KW/1.8KW

# Road / Street Lighting Applications



# Delta EUCI Series for Road / Street Lighting



	EUCI Premium (GIA)	EUCI Lite (GLB)	EUCI Basic (GBA)
<b>Protocols</b>	<ul style="list-style-type: none"> <li>• <b>DALI 2 / certified D4i</b> with linear dimming range 5% - 100 %</li> <li>• <b>Integrated 24VDC auxiliary power supply</b> (DALI Part 150)</li> </ul>	<ul style="list-style-type: none"> <li>• <b>DALI 2 / DiiA</b> with linear dimming range 5% - 100 %</li> <li>• <b>Luminaire Data</b> (DALI Part 251) and <b>Diagnostics Data</b> (DALI Part 253)</li> </ul>	N/A
<b>Dimming Control</b>	<ul style="list-style-type: none"> <li>• Autonomous dimming via integrated Midnight Centric Timer / Ratio Rescale (5-Step)</li> <li>• <b>Corridor function / mode</b></li> </ul>	<ul style="list-style-type: none"> <li>• Autonomous dimming via integrated Midnight Centric Timer / Ratio Rescale (5-Step)</li> <li>• <b>Corridor function / mode</b></li> </ul>	Autonomous dimming via integrated Midnight Centric Timer / Ratio Rescale (5-Step)
<b>Programming</b>	Easy and flexible wireless programming via <b>NFC</b>	Easy and flexible wireless programming via <b>NFC</b>	Easy and flexible wireless programming via <b>NFC</b>
<b>Output</b>	Constant Light Output (CLO)	Constant Light Output (CLO)	Constant Light Output (CLO)

# Road / Street Lighting LED Driver P/N & Specifications

EUCI Premium	EUCI-022105GIA	EUCI-040105GIA	EUCI-075105GIA	EUCI-130105GIA	EUCI-170105GIA
EUCI Lite	EUCI-022105GLB	EUCI-040105GLB	EUCI-075105GLB	EUCI-130105GLB	EUCI-170105GLB
EUCI Basic	-	EUCI-040105GBA	EUCI-075105GBA	EUCI-130105GBA	EUCI-170105GBA
Input Voltage Range			198-264 Vac		
Output Voltage	8-48 Vdc	22-77 Vdc	35-150 Vdc	60-200 Vdc	80-310 Vdc
Programmable Output Current Range			200-1050 mA		
Output Power	22W	40W	75W	130W	170W
Efficiency @230Vac		90%		93%	
Control Method	DALI2 (D4i) - DALI 2 - On/Off Midnight Centric Timer, Ratio Rescale, Fixed Timer (5-step), Corridor mode				
Ambient Temperature	-40C ~ +55C				
Housing Type	Potted plastic case / IP20				
Dimension (LxWxH)	133 x 77 x 40 mm			150 x 90 x 40 mm	170 x 100 x 40 mm

# Easy Driver Programming

A series of NFC readers from FEIG can be used to program Delta EUCI LITE and Premium LED drivers, including CPR30-USB and ISC.PRH101-USB. No additional wiring needed.



CPR30-USB

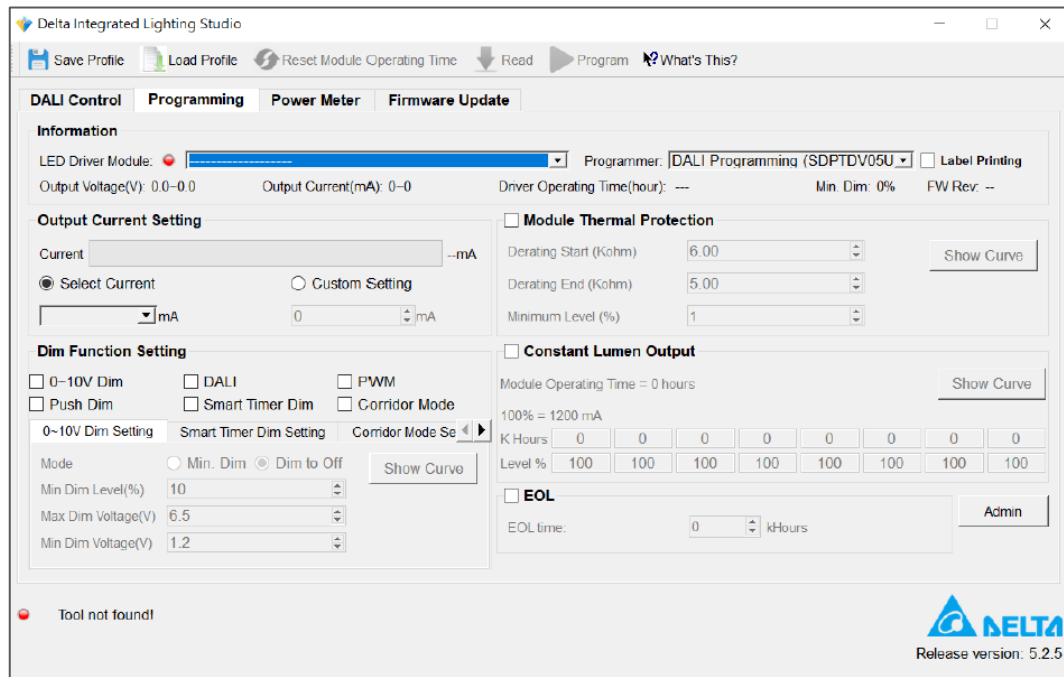
CPR30-USB desktop  
NFC reader



ISC.PRH101-USB

ISC.PRH101-USB  
handheld NFC reader

The driver can be found on [www.feig.de](http://www.feig.de) or the software installation package.



The user interface of Delta's LED driver programming.

A wide-angle, low-perspective shot of a large sports stadium at night. The stadium is filled with spectators, and the field is brightly lit by a long row of powerful floodlights along the top edge of the stands. The lights create a strong lens flare effect, illuminating the entire scene. The central focus is the green field, with a white line running down the middle. The stands are filled with a dense crowd of people, and the overall atmosphere is one of a major sporting event.

# Sport Lighting Applications

# Arena Sport Lighting LED Driver – Offering Overview

## Applications



**4x CHs**

4 x 300W



**2:1 Configuration**

- 1.2 KW 4-CH DALI2-RGBW+DMX-RDM



**3x CHs**

3 x 500W

3 x 600W

3 x 700W



- 1.5KW 3-CH DALI2
- 1.5KW 3-CH DMX-RDM



- 2.1KW 3-CH DALI2-D4i
- 2.1KW 3-CH DMX-RDM



**2:1 Configuration**

- 1.8 KW 3-CH DALI2-D4i+DMX-RDM
- 1.6 KW 3-CH DALI2-D4i+DMX-RDM



**2x CHs**

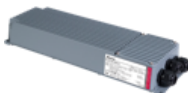
2 x 500W

2 x 600W

2 x 700W



- 1.0KW 2-CH DALI2
- 1.0KW 2-CH DMX-RDM



- 1.4KW 2-CH DALI2-D4i
- 1.4KW 2-CH DMX-RDM



**2:1 Configuration**

- 1.2 KW 2-CH DALI2-D4i+DMX-RDM



**1x CH**

1 x 600W

1 x 1800W



- 600W 1-CH DALI2
- 600W 1-CH DMX-RDM



- 600W 1-CH DALI2-D4i
- 600W 1-CH DMX-RDM



- 1.8KW 1-CH DALI2+D4i/DMX-RDM





# EUCO Arena Sport Series LED Drivers



## Flexible Control

- DALI-2 with D4i certification
- DMX-RDM
- DALI RGBW



## Performance and Reliability

- Designed for high-performance, large-scale stadium illumination
- Robust, efficient, and long-life LED driver system



uu



## Safety Compliance and Global Sports Standards

- CE, ENEC, UKCA, UL listed; CCC, RCM, DALI2, D4i, CB, FCC, Global Mark
- FIFA, UEFA, or FIBA broadcast standards



## Reliability & Safety

- IP66 Ingress protection
- IK08 Impact protection
- Corrosion grade C5 (ISO 9223/9227)



## Scalability & Smart Integration

- Integration with IoT building management systems
- Remote monitoring and diagnostics
- Scheduling and zone-based lighting

# Arena Sport Lighting LED Driver - Specifications

DALI 2	EUCO-600200GLA	-	EUCO-1K0140GLA	EUCO-1K5140GLA	-	-
DALI 2 D4i	-	EUCO-600200GID	-	-	EUCO-1K4200GIA	EUCO-2K1200GIA
DMX / RDM	EUCO-600200GDA	EUCO-600200GDD	EUCO-1K0140GDA	EUCO-1K5140GDA	EUCO-1K4200GDA	EUCO-2K1200GDA
Input Voltage Range	198-440 Vac					
Output Voltage	200-550 Vdc		260-500 Vdc	260-500 Vdc	250-550 Vdc	250-550 Vdc
Output Current	700-2000 mA		500-1400 mA	500-1400 mA	700-2000 mA	700-2000 mA
Output Channel(s)	<b>1</b>		<b>2</b>	<b>3</b>	<b>2</b>	<b>3</b>
Max. Output per Channel	600W		500W	500W	700W	700W
Total Output Power	600W		1000W	1500W	1400W	2100W
Efficiency @400Vac	97.5%		>94%	>94%	97.9%	97%
Control Method	Autonomous dimming					
Output Current Ripple	< 1%					
Ambient Temperature	-40C ~ +60C			-40C ~ +50C		
Housing Type	Aluminum case / IP66 with connectors	Aluminum case / IP66 with encapsulated cables	Die Cast Aluminum case / IP66			
Dimension (LxWxH)	315 x 100 x 49 mm			500 x 152 x 77 mm		

# Arena Sport Lighting LED Driver - Specifications

Combi DALI 2 D4i + DMX / RDM	EUCO-1K2200GCA	EUCO-1K6200GCA	EUCO-1K8200GCA	EUCO-1K2100RCA
Input Voltage Range	187-528 Vac			
Output Voltage	180-550 Vdc			50-370 Vdc
Output Current	700-2000 mA			150-1200 mA
Output Channel(s)	<b>2</b>	<b>3</b>	<b>3</b>	<b>4</b>
Max. Power per Channel	600W	550W	600W	300W
Output Power	1200W	1650W	1800W	1200W
Efficiency @230Vac	>97.5%			97.2%
Control Method	<b>Autonomous dimming</b>			<b>RGBW</b>
Output Current Ripple	<1%			
Ambient Temperature	-40C ~ +50C			
Housing Type	Die Cast Aluminum case / IP66			
Dimension (LxWxH)	500 x 152 x 77 mm			

A photograph of an industrial facility at night, illuminated by various lights. The structure is complex, with many levels and beams. The lights are warm and yellow, creating a strong contrast against the dark blue sky. The text "Industrial Lighting Applications" is overlaid in the center in a white, bold font.

# Industrial Lighting Applications

# Industrial / Outdoor Lighting LED Driver

Main Specs	USCO-320210GA	USCO-320280GA	USCO-600400GA
Regulation Method	Constant Current		
Input Voltage Range	99 – 305Vac	99 – 305Vac	108V – 305Vac
Output Voltage	90 – 225Vdc	60 – 152Vdc	150 – 300Vdc
Output Current	700 – 2100mA	1400 – 2800mA	1000 – 3000mA
Output Current Tolerance	±5%		
Output Power	320W	320W	600W
Efficiency @230Vac	94.00%	94.00%	>95%
Output Current Ripple LF	<5%	–	–
Control Method	1-10V Dimmable		
Auxiliary Output Voltage	+12Vdc/50mA	12.6Vdc/200mA	
Ambient Temperature	-40...+50°C		
Housing	Aluminum casing IP67		
Dimension (L×W×H) mm	240×100×38	308.4×116.7×50.8	

# Refrigerated Display Lighting sub-segments



## Bottle Cooling / Ice Cream Fridge

10W – 15W – 20W – 30W

No binding compliance regarding IEC 60335-2-89 (annex BB)



## Walk-in & Island Cabinets

60W – 80W

Mostly cases LED drivers must in compliance with IEC 60335-2-89 (annex BB)



## Supermarket Refrigerate Cabinets

80W – 100W – 150W – 240W

Generally LED drivers must require compliance with IEC 60335-2-89 (annex BB)

# Refrigerated Display Lighting LED Driver - Specifications

Main Specs	USVI-020024FR	USVI-060024FR	USVI-080024FR1	USVI-100024FR1	USVI-150024FR	USVI-240024FR
Input voltage range	198-264 Vac	108 - 305Vac				198 - 264Vca
Output voltage	24Vdc					
Rated Output current	0.833A	2.50A	3.33A	4.00A	6.25A	10.00A
Output power	20W	60W	80W	100W	150W	240W
Efficiency @230Vac	85.4%	87.0%	90.0%	90.0%	91.0%	92.5%
Control method	Fixed Output					
Ambient temperature	-40~+55°C					
Safety	UL Class II power supply, IEC 60335-1, IEC 60335-2-24 annex BB, IEC 60335-2-89 annex CC					
Insulation class	Class I/II					
Housing Type	Potted plastic case / IP20					
Dimension (LxWxH) mm	132x34x25.4	241.3x43.1x30.0				240x70x37.5

# Upcoming Product

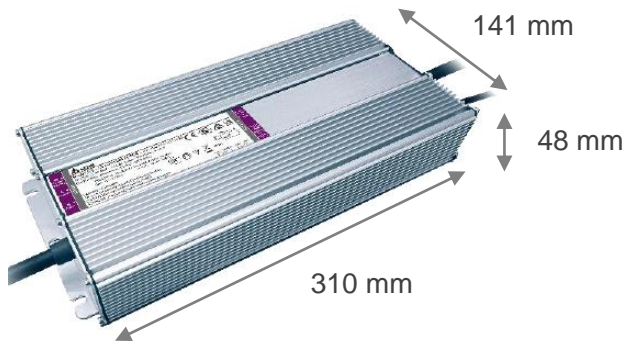


# Upcoming LED Drivers

Part Number	Total Output Power	Number Channel	Max. Output Power/Channel	Dimming Type	Input voltage Range	Output voltage Range	Programmable Output current Range	Commercial Launch date	Market Application
<b>LNA-1K2A60ABCCA</b>	1200W	1	1200W	0 - 10V	180 ~ 528Vac	100 - 305Vdc	2.0 - 6.0A	<b>Apr-26</b>	Industrial Lighting Horticulture Lighting
<b>LNA-1K8A45ABFCB</b>	1800W	1	1800W	0 - 10V	180 ~ 528Vac	400 - 550Vdc	1.5 - 4.5A	<b>Feb-26</b>	Industrial Lighting Horticulture Lighting
<b>LNA-1K8A45ABHGB</b>	1800W	1	1800W	DALI2/D4i-DMX/RDM	180 ~ 528Vac	400 - 550Vdc	1.5 - 4.5A	<b>Feb-26</b>	Sport Lighting
<b>USVI-150024FR</b>	150W	1	150W	Fixed Output	120 - 277Vac	24Vdc	0.1 - 6.25A	<b>Feb-26</b>	Retail Display Lighting Refrigerated Display Lighting

# Industrial / Outdoor High Wattage LED Driver

## LNA-1K2A55ABCCA



### Key Features

- World-wide input range 187Vac~528Vac
- 1x output channel: max. **1200W**
- Programmable output current range 400-6000mA
- Output voltage range of 100-310Vdc
- **0-10V dimming**
- High surge protection: CM 10kV; DM 6kV
- Max. remote distance **300** meters
- **IP Rated 67**

# Industrial / Outdoor High Wattage LED Driver

LNA-1K8A45ABHGB  
LNA-1K8A45ABFCB



## Key Features

- World-wide input range 180Vac~528Vac
- 1x output channel - Programmable output current range
  - 1.8kW - 249~528Vac input
  - 1.5kW - 198~248Vac input
  - 1.35kW - 180~197Vac input
- Wide output voltage 150-550Vdc
- DALI-2 & D4i +RDM/DMX 0-10V/PWM/resistor control interfaces
- High surge protection: CM 15kV / DM 10kV
- Max. remote distance **300** meters
- IP Rated 66
- **Dimensions ( LxWxH )** 345x152x62mm



# Refrigerated Display Lighting LED Driver

## USVI-150024FR



### Key Features

- Constant voltage design with output voltage 24Vdc
- Suitable for **Class I** and **Class II** systems
- Universal input voltage from 120-277Vac
- Full compliance **with IEC standard 60335-2-89:2019** (increase the flammable refrigerant charge size limits)
- Minimize potential ignition, such as sparks that could cause a fire or explosion in the presence of flammable refrigerants



# Retail Display Lighting



# Retail Display Lighting

Output Voltage 24Vdc



Safety Standards



Main Specifications	USVI-020024FA	USVI-060024FG	USVI-060024FH	USVI-100024FG	USVI-100024FH	USVI-060024DG
Regulation Method	Constant Voltage					
Input voltage range	120 - 277Vac					
Output Voltage	24Vdc					
Load regulation	± 3%					
Output Power	20W	60W	60W	100W	100W	60W
Output channels	1					
Efficiency @230 Vac	80%	90.0%	87.0%	89.5%	90.0%	90.0%
Control method	Fixed Output					0 - 10V Dimming
Ambient temperature	-40...+60°C			-40...+55°C		
Housing	Potted Plastic case / IP20					
Dimension (LxWxH) mm	132x34.1x25.4	148.2x45.6x25.4	148.3x45.6x30	241.3x43.1x25.4	241.3x43.1x30	148.2x45.6x25.4

# Retail Display Lighting

Output Voltage 12Vdc



Safety Standards



Main Specifications	USVI-020012FA	USVI-060012FG	USVI-060012DG
Regulation Method	Constant Voltage		
Input voltage range	120 - 277Vac		
Output Voltage	12Vdc		
Load regulation	± 3%		
Output Power	20W	60W	60W
Output channels	1		
Efficiency @230 Vac	>80%	91.0%	91.0%
Control method	Fixed Output		0 - 10V Dimmable
Ambient temperature	-40...+60°C		-40...+55°C
Housing	Potted Plastic case / IP20		
Dimension (LxWxH) mm	132x34x25.4	140x43.4x30	148x45.6x25.4

Smarter. Greener. Together.

